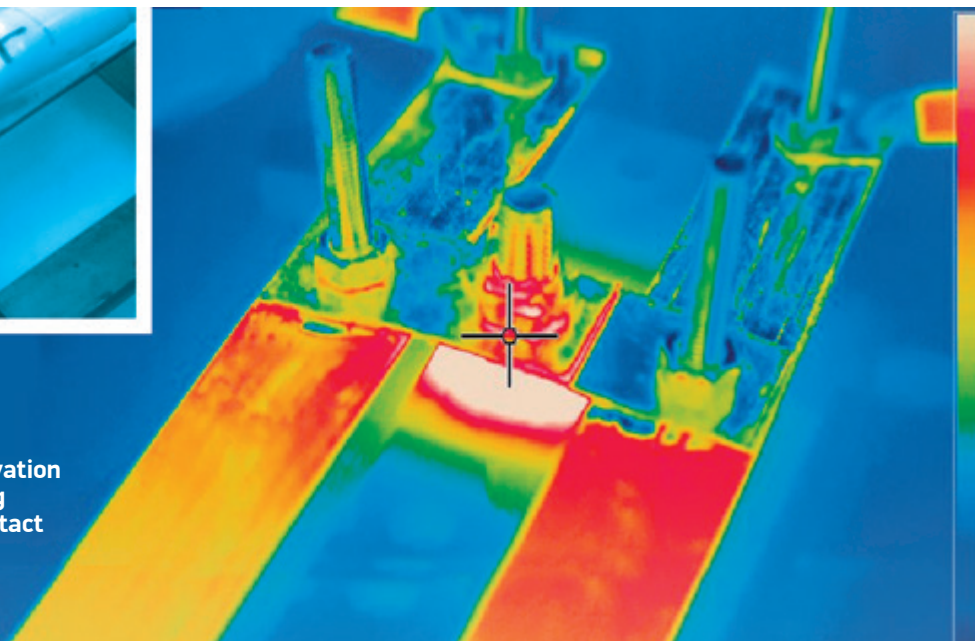


# SHIPBOARD TOOLS FOR VISUAL DIAGNOSTICS OF FIRE HAZARDS

& indication of overheating in electric contacts



Indicator activation at overheating of electric contact (IR image)



The overheating indicators are helpful tools in reducing the electric equipment fire hazards by detection of contact overheating during scheduled maintenance of shipboard electric equipment.

The key element is a thermal bi-metallic plate of special shape fitted to the tip of a contact link. The plate ends are initially joined together, under overheating these ends are disengaged, which is detected during routine maintenance inspections.

The indicators are reusable and provide substantial cost and labor savings in diagnostics as compared to the well-known screwed contact tools (electric resistance gauges, IR imagers, paints, etc.) so that early preventive measures can be taken to avoid any emergencies.

The indicators have been tested for compliance with the requirements of the Russian Maritime Register of Shipping.

The indicators are available in a range of sizes to suit different standard dimensions of contact joints.

**Krylov State Research Centre**

Moskovskoe shosse 44, St. Petersburg 196158, Russian  
Tel.: +7 (812) 727-96-47 Fax: +7 (812) 727-95-94  
E-mail: [krylov@krylov.spb.ru](mailto:krylov@krylov.spb.ru) [www.krylov-center.ru](http://www.krylov-center.ru)